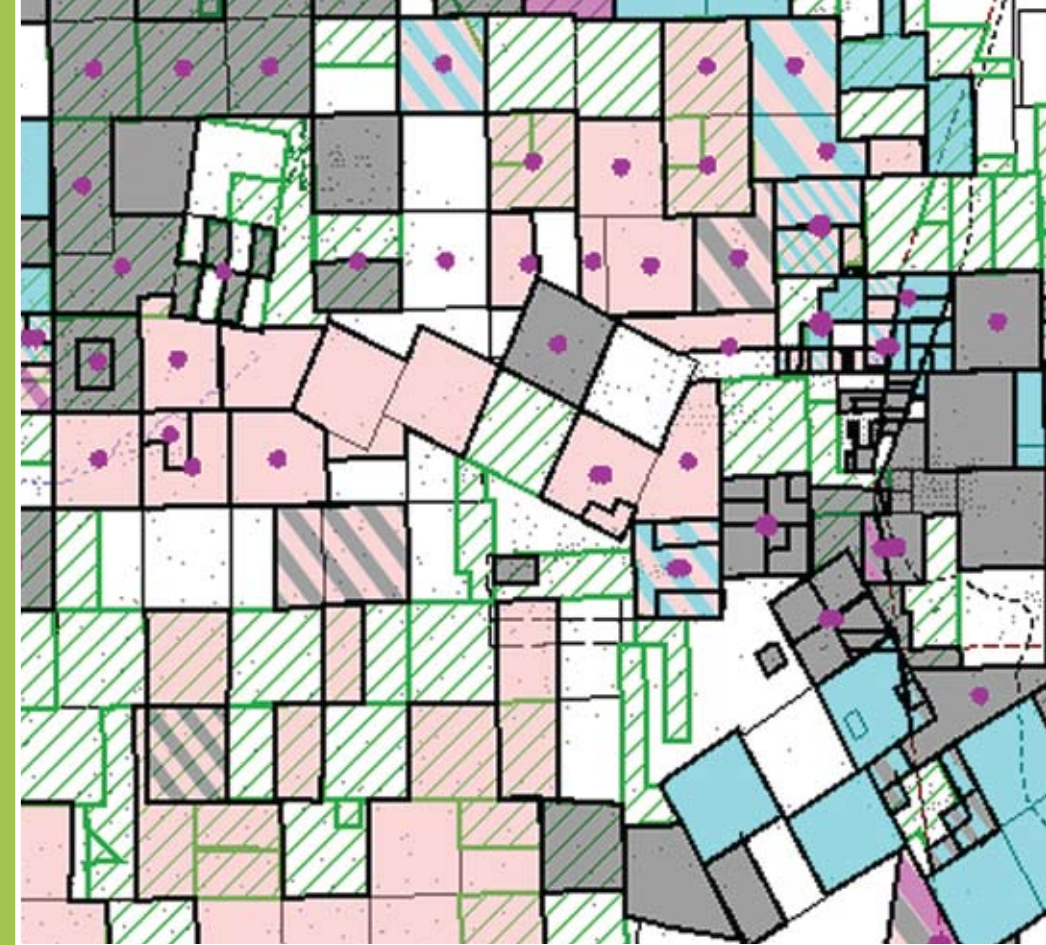


DI's LandTrac™ Unified Land and Exploration Suite

All the dimensions of information for Upstream Oil and Gas

The LandTrac Suite is a fully integrated interface to land, regulatory, and well data inside of Drillinginfo. It presents a comprehensive view of activity on the surface, subsurface, and above ground. The ability to access all three dimensions at through a single interface enhances productivity and creates a competitive edge.



Get on board with Drillinginfo's LandTrac Unified Land and Exploration Suite today. Work smarter and faster with the only unified information platform in the business.

To learn more about the LandTrac Suite go to [www.drillinginfo.com/LandTrac Suite](http://www.drillinginfo.com/LandTracSuite).

Ask your regional Drillinginfo sales representative for a demo or call Drillinginfo direct at **512.477.9200 ext 1**.



P.O. Box 5545 | Austin, Texas 78763
Return Service Requested

PRESORTED
FIRST CLASS MAIL
US POSTAGE PAID
AUSTIN, TX
PERMIT NO. 1

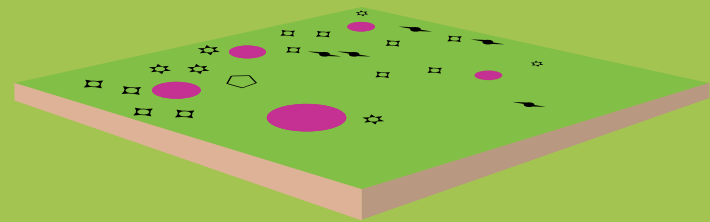
LandTrac™ Unified Land and Exploration Suite

All the Dimensions of Exploration and Production in a Single Interface



1 LandTrac Suite Includes all the Drillinginfo Basics

Drillinginfo has current and up-to-date well and production information applied to the Drillinginfo base map. So you have all the training you really need to use our LandTrac Suite. Just start with a typical search using our intuitive search wizard and you are on your way to finding the answer you're looking for.

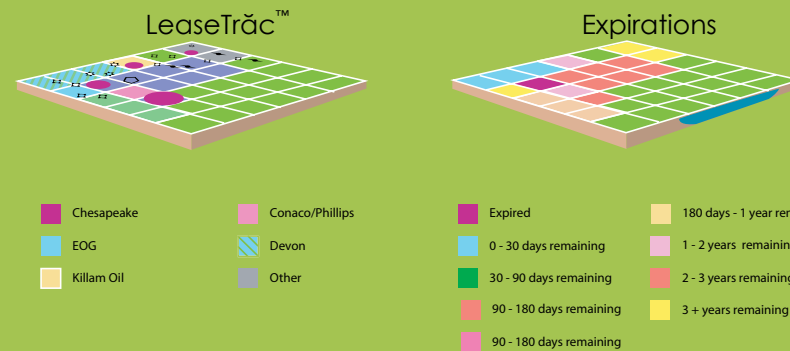


- Dry hole
- Gas well
- Plugged oil well
- DI Criteria Search Match
- horizontal drainhole

2 LeaseTrac™ Maps

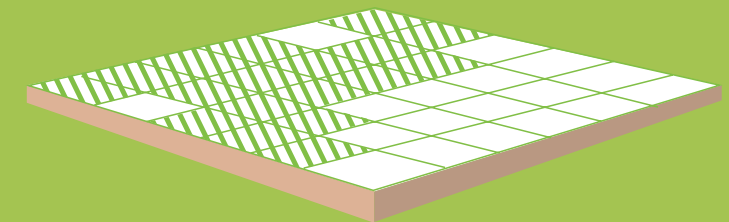
Drillinginfo's LeaseTrac Maps provide a comprehensive view of the most current leasing activity within a county.

Use the Lease Expiration annotation to see open acreage and acreage set to expire so that strategies for acquiring new leases can be developed in a fraction of the time. Then, select the Grantee annotation option to see who has the current leases within your areas of interest.



3 UnitTrac™ Maps

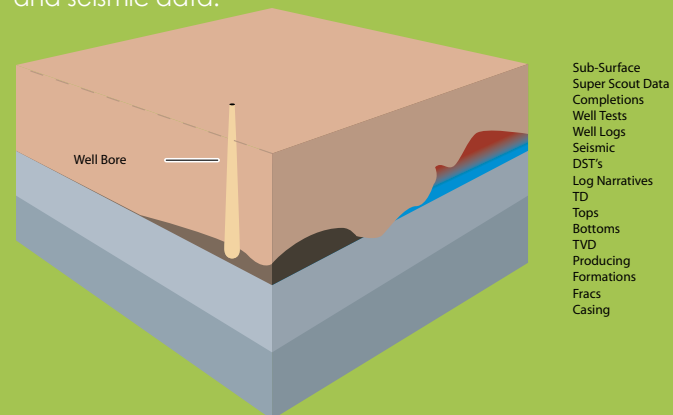
Drillinginfo's UnitTrac Maps present a view of tracts within select counties with current production, or that is otherwise held by production (HPB), based on regulatory filings. When used with LeaseTrac Maps they provide the most accurate interpretation of the status of mineral lease tracts within a county. You can even see the actual document image to validate the unit status.



- Regulatory Filings:
 - W-1
 - P-12
 - P-15
- Unit Outlines

4 Get a Clear View of What Lies Beneath the Surface

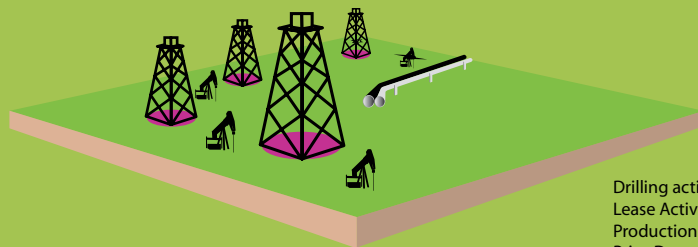
LandTrac™ Unified Land and Exploration Suite allows you to integrate the tract outlined with a wide range of well and subsurface information to evaluate the opportunity associated with specific tracts or for offset tracts in the same area. Drillinginfo has a comprehensive database that includes tops, well tests, reservoir pressures, well logs, and seismic data.



- Sub-Surface
- Super Scout Data
- Completions
- Well Tests
- Well Logs
- Seismic
- DST's
- Log Narratives
- TD
- Tops
- Bottoms
- TVD
- Producing Formations
- Fracs
- Casing

5 Take a Closer Look at What's Happening Above Ground

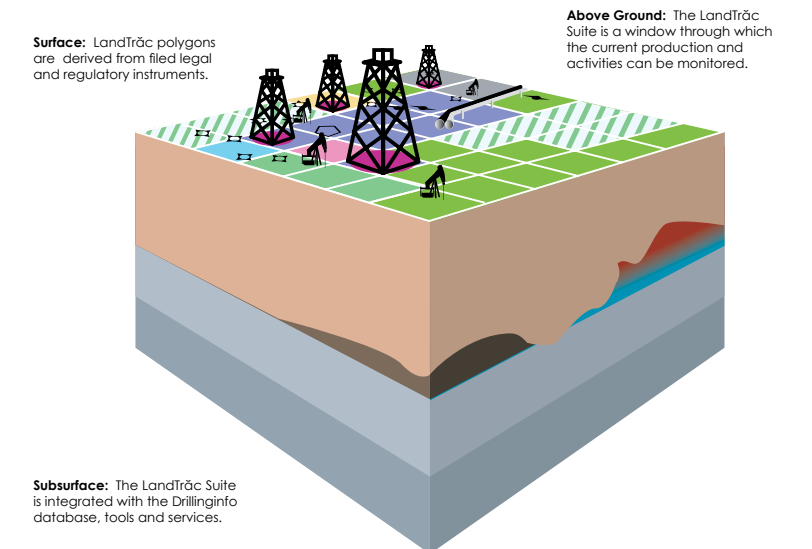
Work smarter with more information tied to the results of the exploration that exists in the county you are interested in. Find out what wells are producing on a specific tract or in an entire area with the LandTrac™ Suite. Assess the drilling activity in an area, find historical production data, locate pipelines, and identify the operators.



- Drilling activity
- Lease Activity
- Production
- Price Data
- Pipeline Data
- Location Data

6 LandTrac™ Unified Land and Exploration Suite is Unifying

An integrated look at exploration and production in all three dimensions.



Surface: LandTrac polygons are derived from filed legal and regulatory instruments.

Above Ground: The LandTrac Suite is a window through which the current production and activities can be monitored.

Subsurface: The LandTrac Suite is integrated with the Drillinginfo database, tools and services.